

The il Leak

January 2020 Minuteman Model A Ford Club Volume 57 Issue 1

The President Speaks:

Well winter settled in quickly enjoy the best you can !! Wishing you and all your family and friends a happy and healthy new year !!

The holiday party on Dec 8 went off well, all who attended had a great Time. Put this event on your to do list for Dec 2020 you will enjoy the Buffet meal with Model A friends!!

I want to thank Harold Samuels and all who pushed 2019 to a successful year, it takes a lot of work behind the scene's to keep everything working. It is great to have so many who care and volunteer. !!

Now we need to get going on 2020 tours and meeting topics . Participate by coming up with ideas and let us know.

Don't forget to let Harold Samuels know if you are coming to the January dinner meeting on Jan 7. He needs a good head count to order the Food for the meeting.

Any questions or problems please email or call and I will try to find an answer for you.



KEEP SMILING EVERY DAY

Doug Farrell



Sunshine

Sue Champagne
(sdchampagne1931@gmail.com)

Sue reports no cards were sent out last month, this is good news.

If you know of a member who needs a little cheering up contact me.

Coming Events

(Tours Start at Wayland Town Center RT 20)

Jan 7: Installation Dinner see page 6 for more information

Feb 4: Regular Club Meeting

Feb ? : Tour Planning Meeting (date TBD)

Mar 1: MARCOM Flea Market (Norfolk, MA)

Minuteman Model A Ford Club

Treasurer's Report
November, 2019

Income:

Club Auction	536.00
Coffee Can	29.00
Donation	4.00
Member Dues	<u>460.00</u>
Total Income	\$ 1029.00

Expense:

Office Supplies	287.06
Coffee Supplies	33.00
Wayside Inn Dinner	<u>1051.90</u>
Total Expense	\$ 1371.96

Net Income \$ - 342.96



MINUTEMAN HISTORY

by Art Callan

JANUARY 1985 35 YEARS AGO

Pres. Dick O'Brien reports that 30 people made the meeting on a bitter cold night.

Under new business: Bob Kellner presented the club with a check for \$50-, following the restoration of his Sport Coupe. (Yes, last time the hood was up!) Arnold Goff did the work and bought the spare parts.

JANUARY 1995 25 YEARS AGO

New officers: Pres. Steve Goldberg, VP Art Callan, Secy Marlies Plaggenborg, Treas Doug Linden. Tech speaker: Joe DiMilia, building and repairing starters. FIRST OFFICER INSTALLATION PARTY, ham, baked beans with fresh rolls.

NEW-- Art Callan introduces plans for FIRST "Winter Blahs Swap Meet".

JANUARY 2005 15 YEARS AGO

Pres Bruce Marshall, VP Tom Zappala, Secy Janice Wright, Treas Gene Tallone.

Holiday Party in Dec great success with Toys For Tots. Table decorations by Nan Linden and Barbara Tallone. Music by the "Swingers".

In 1909 the first auto races were run at the just-opened Indianapolis Motor Speedway. The winner of the first event was auto engineer Louis Schwitzer, who drove a Stoddard-Dayton car twice around the 2.5 mile track at an average speed of 57.4 mph.

In 1942, Pres Franklin Roosevelt announced coffee rationing, which had limited people to one pound of coffee every five weeks.

National Organizations: If you are not already members of the following organizations, consider joining them.



Model A Ford Club of America (mafca.com)

Membership dues \$50/year



Model A Restorers Club (model-a-ford.org)

Membership Dues \$45/year



**Model A Ford Foundation (maffi.org)
and the Model A Ford Museum \$25/yr**

Secretary's Report

Minutes of the Minuteman Model A Club December 8, 2019 No Meeting—Holiday Party

The holiday party on Sunday Dec 8 was our final event of the season and it was a wonderful time for the 54 people who attended this celebration. VP Doug Farrell did fine job making the arrangements with Conrad's Restaurant. It was great to see the various Holiday attire worn by the members: some great Ties and Sweaters.

The hors d'oeuvres while socializing with our "amber fluids" were excellent. After lots of great conversation the staff brought out the items on the buffet which were outstanding; you know it's amazing how much quieter it is when the food is on the table. Not forgotten was a great cake for dessert.

We thank all our members who brought items for the Toys-for-Tots collection. Ed & Joyce Croci had a car full of gifts to deliver to the local drop off location.

The Holiday Party was another great day of Model A friends getting together to celebrate the Holidays. See you in January at the annual Installation Dinner.



A great turn out for the Holiday Party



The food was plentiful and good



John looks pretty dapper in his Bowler Hat

2019 Board of Directors

President - Doug Farrell dfarrell1416@gmail.com

Vice President - Bob Mangan

Secretary - Rick Gadbois r.gadbois@comcast.net

Treasurer - Barbara McElhiney mcelhiney@rcn.com

Membership - Nan Linden 508-485-7575 met59a31@aol.com

Editor - Doug Linden douglingen@aol.com

Steering Committee

Wayne Champagne, Rich Batstone, Tom Zappala, Harold Samuels, Jo Johnson - Emeritus

Tour Directors: Don Ross 617-584-5245

Sunshine: Sue Champagne sdchampagne1931@gmail.com

Newsletter Distribution: Sue Champagne sdchampagne1931@gmail.com

“WARNING”

Maynard Area Auto Club ends 31-year run

The Maynard Club is closing the club doors on January 1st. What a shame! The problem is that there were no volunteers willing to step up and keep the club rolling.

THIS COULD HAPPEN TO OUR CLUB

Have you noticed how hard it is to get volunteers to help in the Minuteman Club. You say “Oh this couldn’t happen”...well look how long we have been looking for someone just to make the coffee at the meetings. And getting people to volunteer to be an officer is almost impossible. Volunteering to help out the club isn’t hard or complicated, it takes a little time BUT helps keep the club going.

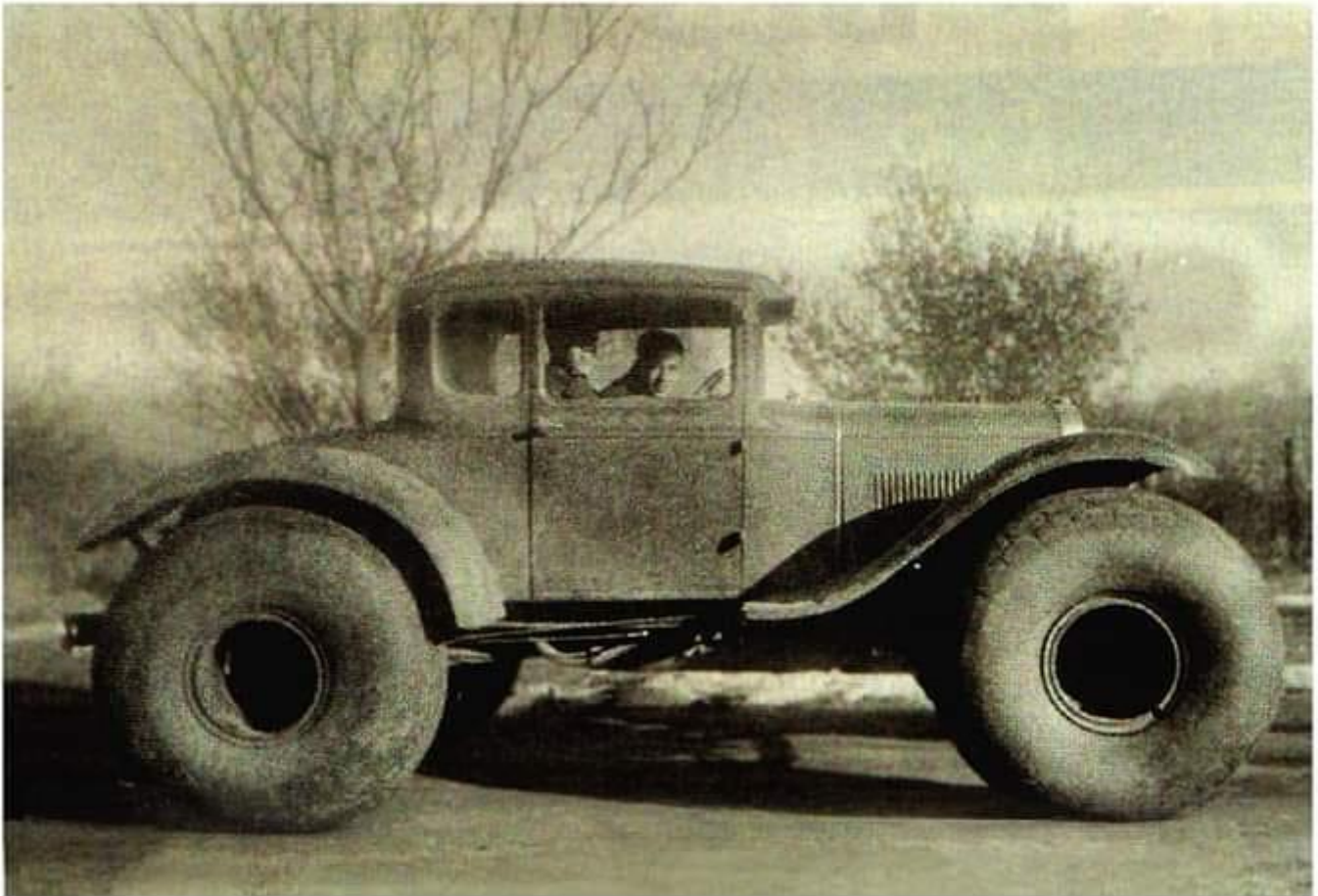
Please be a volunteer.

For the full report on the Maynard club visit this link:

https://maynard.wickedlocal.com/news/20191210/maynard-area-auto-club-ends-31-year-run?fbclid=IwAR19Pzx7IVoT4ITLA0ts-v5ESgHi1RzXE0cdSVPHQ7o_qnOHZLT4mo7w1e8



How about this Model A conversion. It was amazing what innovation people came up with to overcome challenges during the Model A era. This is another example that shows the ingenuity needed to make sure the Mail get delivered. With those tires I don't think it got stuck.



Old Car With an Inflated Ego

The vehicle in this photo from the winter of 1940 might have been the first monster truck! The Ford Model A body was put on a Model AA truck frame with airplane tires installed. The guy leaning forward is my brother Eugene Myers, who was on leave from the Navy.

Our dad put this modified Ford together to handle the snow on his rural mail route around Fullerton, Nebraska, and there was a lot of snow in the 1930s and '40s. Dad said the Ford would run over anything, but it was so high that the wind sometimes would blow it off the road.

Leland Myers, Plattsmouth, Nebraska

Help is Still Needed



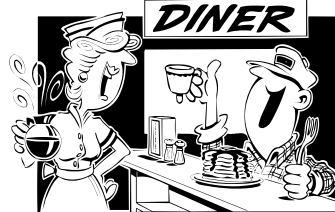
Coffee Person

I can't believe no one has offered to make the coffee. How about someone **JUST** for the February meeting. Call Harold if you would like to volunteer.



↑ *Weekly Breakfast Group* ↑

Doing anything on Wednesday morning? No. Well then, you are invited to join the group for breakfast at the Big Apple, 890 Boston Post Road East (RT 20) in Marlborough, MA. The



food is good and there is plenty of Model A talk. We arrive about 7:15 AM. (see ad page 10)

ATTENTION



January 7th Installation Dinner & Awards Meeting

At this meeting we will install our 2020 officers, present Hard Luck Award and have dinner which will begin at 6:30 PM.



----- RESERVATIONS NEEDED -----

The club will provide the food so we will need a head count.

The "No Reservation - No Food" rule applies.

Please contact Harold Samuels 781-275-2814 or hsamuels10@gmail.com





**The new year near!
Time to renew your
2020 *MEMBERSHIP***

Dues is Due



In order for us to keep our records up to date, **PLEASE** complete the form below and return with your check for \$20. If there are no changes, you won't have to complete the entire form, just check the appropriate box. *Thank you.*

First Name _____ Last Name _____

Spouse/Significant Other Name _____

Street _____

City _____ State _____ Zip Code _____

email _____ Telephone ____-____-____

No Changes _____

Are you over 80 and been a member for at least 5 years? ____ If, yes, membership is free.

I would like to receive my ***Oil Leak*** by email. Yes _____ No _____

(If you do not specify, it will be sent electronically if we have an email address on file.)

Are You a member of MAFFI _____ MAFCA _____ MARC _____

Model A Info:

Year _____ Body Style _____ Year Acquired _____

Year _____ Body Style _____ Year Acquired _____

Year _____ Body Style _____ Year Acquired _____

Year _____ Body Style _____ Year Acquired _____

Please make check payable to: Minuteman Model A Ford Club and mail to

Minuteman Model A Club
P.O. Box 545
Sudbury, MA 01776

Manifold Installation Technique

By Bob Bidonde 1/2019

Here's a technique for installing the intake and exhaust manifolds on the Model "A". This is not for the purist as Henry didn't make it this way. On the other hand, this technique is for the touring car where reliability is more important than authenticity.



- Take out the 2 bolts connecting the intake manifold to the exhaust manifold. These 2 bolts function to maintain intimate contact between the manifolds to produce a hot spot in the intake manifold for cold-start warmup. Although connecting the intake and exhaust manifolds facilitates their installation, it does so at the expense of straining the 2 bolt tabs on the intake manifold. It is not uncommon to see the bolt tabs cracked away on intake manifolds. Machining the manifolds as a set reduces the clamp-up loads, but not totally;
- Install the manifolds individually being sure to use gland rings in each exhaust port;
- Fit each ring beforehand, so it has a 0.06" end gap for expansion. The expansion gap prevents a ring from buckling, going into the exhaust pipe and winding-up in the muffler;
- Snug the manifold attachment nuts, but do not torque them to an amount that flattens the cup washers. The cup washers are actually springs that take-up thermal expansion which tends to loosen the manifold connections to the block. The concave surface of the washers face the engine block. Tighten the nuts enough to stop exhaust gas leakage;
- There is likely to be a gap between the intake & exhaust manifold surfaces where the bolts were removed:
 - Shim the gap closed with metal sheet stock to retain the hot spot conduction heat transfer function for warmup of the intake manifold or,
 - Leave the gap open and loosely install the bolts connecting the manifolds so it looks correct or,
 - Leave the 2 bolts out or,
 - Cut the bolt heads off and cement them in place using JB Weld.

Running with a gap between the manifolds at the hot spot enhances performance because the fuel mixture will be cooler, thus denser. On the other hand, cold start warmup will be longer if there is a gap at the hot spot.

HOW GAS RATIONING WORKED DURING WORLD WAR II

Richard Lentinello - Hemming's Magazine

Form OPA R-501

BUY UNITED STATES WAR BONDS AND STAMPS

UNITED STATES OF AMERICA
OFFICE OF PRICE ADMINISTRATION

GASOLINE RATION CARD

No. 3156410 -B A

THE ACCEPTANCE AND USE OF THIS CARD CONSTITUTE AN AGREEMENT THAT THE HOLDER WILL OBSERVE THE RULES AND REGULATIONS GOVERNING GASOLINE RATIONING AS ISSUED BY THE OFFICE OF PRICE ADMINISTRATION

OWNER'S NAME *Patrick J. Breen*

STREET ADDRESS *8 Columbus Ave.*

CITY OR POST OFFICE *Southbridge* STATE *Mass.*

MAKE *Chevrolet* BODY STYLE *Sedan*

VEHICLE REGISTRATION NO. *217993* STATE OF REGISTRATION *Mass.*

READ INSTRUCTIONS ON REVERSE SIDE OF THIS CARD

ONE UNIT ONE UNIT ONE UNIT ONE UNIT ONE UNIT

Long before the OPEC gas crisis of the 1970s, Americans who owned cars in the 1940s were limited to the amount of gasoline they could buy due to the consequences of World War II. Starting in early 1942, gasoline was deemed a precious commodity and, due to its limited supply, was needed to fuel our planes, tanks, Jeeps, and boats for the war effort.

Still, Americans needed fuel for their cars in order to get to work, so a system was developed and implemented to regulate the purchase of gasoline. Car owners were issued a Gasoline Ration Card—like the one shown here—

that had One Unit tabs on the bottom that were punched when used. Along with the card, a windshield sticker with a specific letter was issued. The most popular was an “A” card/sticker that allowed the car owner to purchase about 4 gallons of gas each week. If you were employed in a factory that supported the war effort, you were issued a “B” card, while doctors, nurses, farm and construction workers, and mail employees were issued a “C” card, each of which allowed them to buy up to 8 gallons of gas per week. There were other specific cards, too, such as an “X” card for members of Congress, “E” for emergency vehicles, “R” for non-highway farm vehicles, and “T” for truckers.

I recently found this A-rated Gasoline Ration Card—No. 3156410—at an antique store in Sturbridge, Massachusetts, hidden among old gas station-issued maps. For a mere \$1.50, I just couldn't pass up this little bit of American history. Although it doesn't state the year of the car (but does list the registration number), it shows that the owner had a Chevrolet sedan. Instructions were listed on the back of the card, as shown here.

INSTRUCTIONS

1. This is your gasoline ration card for the vehicle or boat described hereon. This card must last at least through June 30, 1942, in the rationed area. This card must be presented to your dealer for cancellation of one or more units each time you purchase gasoline.
2. This card can be used only for gasoline delivered into the fuel tank of the vehicle described hereon; or, if a boat, for gasoline to be used therein.
3. The value of the unit may be changed from time to time on announcement by the Office of Price Administration.
4. Your local rationing board alone can make adjustments or issue a different card.

U. S. GOVERNMENT PRINTING OFFICE : 1942—O-455906

Class A Ads



Only

Minuteman

License Plate Toppers

Contact Larry Conley

lconly30@aol.com

\$19.00



Sam Dasmah
Manager

874 Edgell Road
Framingham, MA 01701
508.877.4858 • fax 508.877.9868
maaco.ma@gmail.com



HAROLD SAMUELS

— Realtor, Broker —
Sales Associate at William Raveis

C. 781.572.1592 | F. 781.861.9601
harold.samuels@raveis.com
<http://haroldsamuels.raveis.com>

1713 Massachusetts Ave | Lexington, MA 02420

Your Ad Could Be Here

We have a few opening for ads.
The rate is \$25 for a business card size ad.

**CENTRAL MASS
POWDER
COATING**
INCORPORATED

978-365-1700 OFFICE 32 GREELEY ST.
978-356-1800 FAX CLINTON, MA 01510
www.CENTRALMASSPOWDERCOATING.COM

Breakfast

Lunch

BIG APPLE

890 Boston Post Road East
Marlborough, MA

"HAVE AN 'A' DAY" 

Michael Butcher
1-888-879-6453
email: mike@mikes-afordable.com
www.mikes-afordable.com


Specialising in 1928 - 1931 Model A Ford Parts



EST. 1947

CUSTOMS
ANTIQUE
BOATS
RV'S

RUSMART
AUTO UPHOLSTERY

723 MAIN STREET (RTE. 12), NORTH OXFORD, MA 01537

Ken & Art Clements

(508) 987-1171

Class A Ads

200 Pleasant St.
Unit B
Tewksbury, MA
01876

PVFORD.COM
Parts:
978.851.9159
Service:
978.848.0024

ANTIQUE FORD & CLASSIC CAR
PV
A MILLWORKS
HOT ROD CO.
ESTABLISHED 1975

ANTIQUE FORD & GM PARTS • FULL RESTORATIONS
GENERAL SERVICE • HOT ROD SPEED PARTS • FABRICATION

Ford

TAM'S MODEL "A" PARTS
42 TEMPLE STREET
WEST BOYLSTON, MA 01583

Tel: (508) 835-9292
(800) A-PARTS-1
Fax: (508) 835-9199

UPS ANYWHERE
M.C., VISA, DISC.

WWW.MODELAPARTS.COM
E-MAIL: TAMSFORDA@AOL.COM

EST. 1840

H.H. WARREN INSURANCE AGENCY, INC.

22 GLEASONDALE ROAD, STOW, MA 01775

jsmith@hhwarreninsurance.com

JEFFREY D. SMITH
President

Telephone: (978) 897-7074
Fax: (978) 897-9320

1986 BACK AGAIN CIRCLE
MOUNTAIN VIEW, MO 64171

BRATTON'S
ANTIQUE AUTO PARTS

TOLL FREE
Order 800 255-1929
Fax 800 774-1630
(U.S. and Canada Only)

Information 9: (301) 829-9880
Outside US 9: (301) 829-9881

Our catalog contains over 1,300 Model A parts, each with a FULL description and illustration.
Many full page schematic drawings to help identify parts and assembly sequence.
Supplying quality by using over 90% U.S. made parts.
Serving the Model A restorer with quality parts since 1977.

**Send for a FREE 194 page illustrated
Model A catalog**

WEB: www.brattons.com

Mm MITCHELL MANUFACTURING

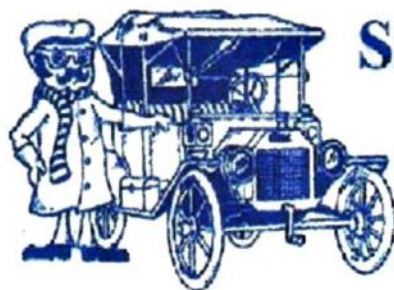
Sue • Steve • Cyndi
Mitchell

Mitchell MFG.
530-458-4500 800-859-2088

FORD OVERDRIVES/UNDERDRIVES 1928-1948
MODEL A FORD SYNCHRONIZED TRANSMISSION
VINTAGE CAR OVERDRIVES

P.O. Box 925 1157 Parker St. Colusa, CA 95932

ADVERTISE WITH US



Snyder's Antique Auto Parts, Inc.

Manufacture, Distribution & Sales of Antique Ford Parts

12925 WOODWORTH ROAD
NEW SPRINGFIELD, OHIO 44443-9753

(330) 549-5313

Minuteman Model "A" Ford Club
PO Box 545, Sudbury, MA 01776



January 2020

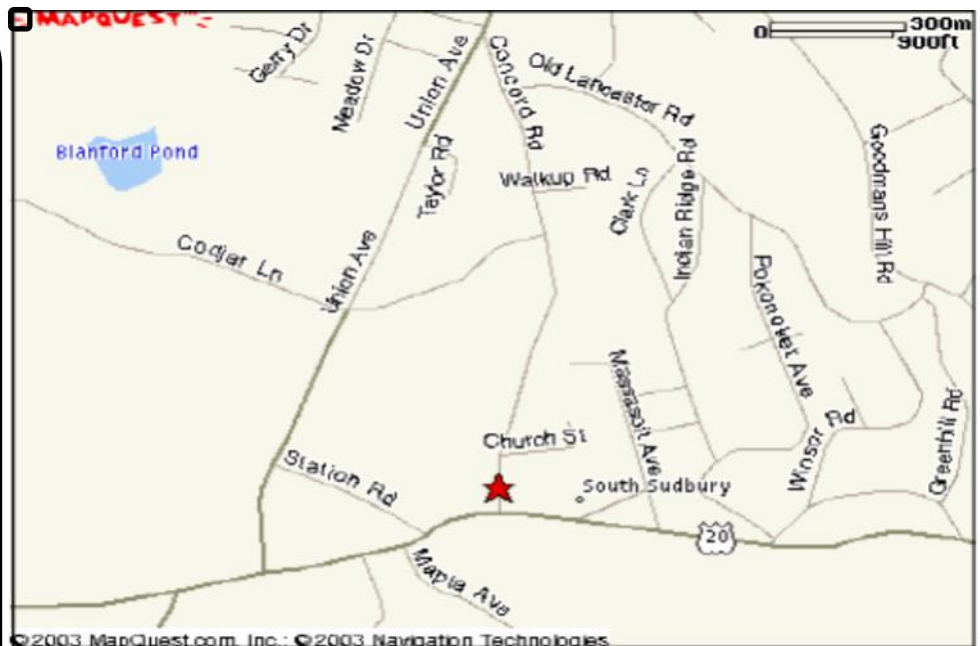
Please
Mail to:

Be sure to visit www.oilleak.org

The January meeting will be our annual installation dinner. To make sure we have enough food you need to contact Harold Samuels (see page 6) to let him know you plan to attend.

DUES IS DUE

See page 7 for info on renewing your membership



Monthly Meetings are held on the first Tuesday of the Month at the Memorial Congregational Church, 26 Concord Rd in Sudbury. Meetings start at 7:30 PM, preceded by "Tire Kicking" at 7:00 PM.