

# The il Leak

May 2025 Minuteman Model A Ford Club Vol 62 Issue 5

## *The President Speaks:*

I am writing this message a little early for the May Oil Leak, so this is partly a review of the present, and an attempt to predict the future. Just to address the past as well, I have included a picture of my Model A with Biplane from the Club's 50<sup>th</sup> anniversary celebration.

Thanks to Craig Martin and his helpers for again organizing and conducting a successful Winter Blahs Swap and Sell. The event was well attended. It is always nice to have the extra income to help finance future club events. Don Ross has distributed the initial tour calendar. Tours may still be added as inquiries come in. We are still open for new tour suggestions/ideas. The April meeting is about to take place as of this writing. I predict that it will be well attended. I further predict that the temperature for the May meeting will be warmer and the day will be longer.



The spring tune-up clinic will take place prior to the May 7<sup>th</sup> meeting (April 26). Thank you to Harold and Sally Legge for hosting the event and to our club mechanics for keeping us safe and trouble free during the touring season. Registrations continue to come in for the September New England Regional Meet. Please contact Tom Zappala or Barbara McElhiney if you wish to volunteer to help at the event. More to come as the date draws closer.

Much to my granddaughter's relief, my Model A will come out of winter storage and be back on the road by the end of April. She will be delighted that I can drive it again - so no more "poor grampy". Touring and socializing with club members is one of the highlights of the spring



*Happy Motoring*  
*Harold*



## Sunshine

Sue Champagne

Three Get Well cards were sent out this month to: Peg Michalak, Clyde Kelton and Grace Doyle.

A sympathy card was sent to Bob Griffin.

*If you know of a member who needs a little cheering up contact me. sdchampagne1931@gmail.com)*

## Coming Events

(Tours Start at Wayland Town Center RT 20)

- May 3** 10 AM Lunch PO Office Pub Don Ross (TL)  
**May 7** Regular Club Meeting  
**May 18** Noon Wellesley Veterans parade (See pg 3)  
**May 25** 10AM Wellesley College Reunion (See pg 3)  
**June 4** Regular Club Meeting

TL = Tour Leader

### Minuteman Model A Ford Club Treasurer's Report March, 2025

#### Income:

Coffee Can	12.00
Donation	5.00
Flea Market	689.00
Flea Market Attendance	1230.00
Flea Mkt Vendor Fee	420.00
Raffle (club)	26.00
<u>Member Dues</u>	<u>360.00</u>
Total Income	\$ 2742.00

#### Expense:

Flea Market	155.70
<u>Oil Leak Printing</u>	<u>80.00</u>
Total Expenses	\$ 235.70

**Net Income** \$ 2506.30

## MINUTEMAN HISTORY

by Dick O'Brien

### MAY 1990 35 YEARS AGO

We were fortunate to have a good friend in MADD (Mothers Against Drunk Driving) who attended our meeting. Janet Locke was the local MADD Chapter President. We were setting up all of the final planning for 15 Model As to be displayed at Spag's and the Nancy Kelly Dancers were the entertainment, plus Spag's supplied the door prizes that were given out to help make some money and to help MADD get their message out. Mike Towle from Medway was introduced as a new member. He owned a AA Stake Body Truck

### MAY 2000 25 YEARS AGO

As of May's meeting, our Club was a Life Member of the Model A Ford Foundation by virtue of our \$200 payment. Their directors were in the process of sorting out offers for land and buildings to house a collection. Phil Iorio had Radiator Flag Sets for sale at \$2.00. New members Dick and Mina Sneden of Natick were also owners of a beautifully restored and registered 1928 Leatherback Coupe.

### MAY 2010 15 YEARS

It was a cold, raw, and rainy day for our Tour Clinic so the event was canceled. That just meant that the things we do at the Clinic would have to be done on your own time at home. "Check all your lights, your horn and wipers. Check tire pressure and lug nuts. Look for any gas line leaks. Check for water pump leaks and worn front bearings. Make sure the generator or alternator is charging the battery. Check your oil and the fluids in the transmission, steering, rear end, and I would repack the front bearings and grease all of the fittings".

**National Organizations: If you aren't a member of these three groups, we encourage you to join them**



**Model A Ford Club of America (mafca.com)**

Membership dues \$50/year



**Model A Restorers Club (model-a-ford.org)**

Membership Dues \$50/year



**Model A Ford Foundation (maffi.org)  
and the Model A Ford Museum \$35/yr.**



## 2025 Board of Directors

**President** - Harold Samuels *hsamuels10@gmail.com*

**Vice President** - Peter McLaughlin *petermclaughlin1485@gmail.com*

**Secretary** - John Erb *john.erb@verizon.net*

**Treasurer** - Barbara McElhiney *mcelhiney@rcn.com*

**Membership** - Nan Linden 508-485-7575 *met59a31@aol.com*

**Editor** - Doug Linden *douglingen@aol.com*

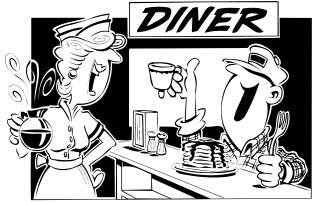
### Steering Committee

Brad Johnson, Rich Batstone, Tom Zappala, Wayne Champagne, Jo Johnson - Emeritus

**Tour Director:** Don Ross 617-584-5245 *dross02466@gmail.com*

**Sunshine:** Sue Champagne *sdchampagne1931@gmail.com*

### *Weekly Breakfast Group* ➔



The breakfast group at the Big Apple, 890 Boston Post Road East (RT 20) in Marlborough, MA. We meet every Wednesday

around 7:30 AM. Why not join us there is always room for you. ➔



### **Paid Events**

**May 18:** The Wellesley Veterans Parade is a paid event for our club. Line up is at the Wellesley Public Works on RT 9 at **Noon** for a 1PM start. We get paid by the # of cars, so lets have a good turn out.

**May 25:** At the Wellesley College Reunion our club provides the most senior class members attending the reunion a ride in the Model A's for the short campus parade. The more A's we have the more elderly ladies we can give rides to. We line up at the chapel on campus at **10AM**.

### **MARC Mileage Award**

**40,000 Miles**

**Congratulations to Bruce Marshall, Minuteman Region, for reaching 40,000 miles with his 1930 Model A Ford Standard Coupe.**

**Report By:** Wayne Champagne, Minuteman MARC Driving Coordinator

The MARC Mileage Driving program is open to all Minuteman members who are also MARC (Model A Restorer's Club) national members. Contact Wayne for more information



*"The man who will use his skill and constructive imagination to see how much he can give for a dollar, instead of how little he can give for a dollar, is bound to succeed."* Henry Ford

## Secretary's Report

### Minutes of the Minuteman Model A Ford Club April 3, 2025

Sudbury Grange Hall, Sudbury, MA

President Samuels opened the meeting at 7:32 PM with 37 members in attendance.

He led in the pledge of Allegiance. The Secretary's report was accepted as printed in the oil leak with one correction. The Treasurer's report was accepted as printed.

Vice president Peter McLaughlin announced he still had Model A blankets to distribute.

Nan Linden reported on one new member Jeff Rousseau of Framingham.

Don Ross, reporting on tours and said that the printed tour list was available. He reported that there were good tours and parades on the list including a tour to the Charlestown Navy Yard on September 6. It would include a visit to their museum, old Ironsides and a historic destroyer on display. He also reported that the April 26 tour clinic still has openings, and the sign-up sheet was available.

Nan Linden reporting on the upcoming New England meet said there were almost 50 registrations so far. The registration form online is the way to register as it's easier to read. The meet raises a substantial amount of money with the raffle and lottery tickets are a good way to donate to the raffle table.

President Samuels announced that next month there would be a Board of Directors meeting at 6:00 PM prior to the general meeting.

Craig Martin reported on the recent swap meet. It was cold but there was a good turnout of people. He listed members who helped with the event: Peg Michalak did the layout for the meet, Doug Linden put out the signs, Dick Krug did security, Nan Linden and Jude Zioli did admissions. The price was raised to \$5 and helped with the bottom line. Grace Doyle and Peter McLaughlin did coffee; Don Ross and Tony Zioli did the raffle. Many members supplied items for the raffle and many members helped vendors

move their items into the hall. The income for the event was \$1996.51. Next year the event will be held March 22, 2026. Craig also announced his retirement after 17 years and would be available to assist the next chair of the event.

Jo Johnson spoke to the MAFCA Youth Scholarship program and brought Model A books for sale that were given to Scholarship recipients and proceeds of tonight's sale would also go to the scholarship fund.

Doug Linden reported that both national clubs have designated May as Model A Youth month. He suggested that we might consider a youth program at some location in May.

Don Ross emphasized the April tours and the first in May – the Post Office Pub tour.



Dick Krug described the 50/50 raffle for the evening at the break.

Doug Linden reported on the progress on the Model A Museum expansion in Michigan. Walls are up; sheet rock is next. He encouraged all to join MAFFI as well as both national clubs.

The Program for the evening is a discussion of the Tour Clinic, led by Doug Linden.

Dick Krug spoke of the 250<sup>th</sup> event in Concord which includes a parade.

President Harold thanked Dawn and Peter for the refreshments. Next meeting volunteers for refreshments: Jeanne Dowding and Dick Krug.

The meeting was adjourned for refreshments and raffle.

Respectfully Submitted,

*John Erb*

Secretary

# Model A For Sale



## **1929 Model A Roadster**

Sadly selling my 1929 Standard Roadster. She's a beauty with a perfect LeBaron Bonney Top, interior and rumble seat. Color is Rose Beige with Seal Brown belting. Extras include a new set of wind wings and a motor meter. No dents, no rust and runs as good as it looks. Comes with one of our new club blankets in the rumble seat! **\$14,500**

Kit Tucker I can be reached by email at [kittucker@icloud.com](mailto:kittucker@icloud.com)

## **For Sale 1964 Thunderbird**



*Note: This is not a picture of Gary's T-Bird, however it does look exactly like this one.*

Long time member, Gary Hoyt, is thinning his collection. Gary is listing his beautiful 1964 Thunderbird Coupe. Color is Seafoam Green with light green interior. Only 45K miles.

New Price \$17.5K

Contact Gary Hoyt 508-655-0077

## **Ziti's Dinner Night Out**

On April 10th club members got together at Ziti's Trattoria for some great Italian food. It was chilly night but those attending had a great evening of conversation and discussing Model A events. It was also good to have Gary Hoyt join us, that gave some of us a chance to reminisce about our growing up years in the town of Natick. Food events always seem a popular way to get members together.





## 29th Annual Winter Blah's Flea Market March 23, 2025

The 2025 Swap Meet went off without a hitch thanks to all the club members who helped out. (And the cool but dry weather helped). Peg & Lenny Michalak and John Pierce were laying out vendor spaces at 5:00am. Grace Doyle & Peter McLaughlin had the coffee on and Nan Linden & Jude Zeoli started collecting entrance fees at 7:30am. We had 29 vendors. The club helpers Brad Johnson, John Sophis, Doug Farrell, Doug Linden, Dennis Porter, Harold Legge, Rob Quebec and John Pierce got all the vendors in and out of their spaces. Don Ross & Tony Zeoli sold raffle tickets for a large variety of donated items. Dick Krug provided security and we did not have any visits from the Maynard Police. All and all, it was a good Spring kick off event for the Club and we raised just under \$2,000. Thanks again to everyone for the help and I apologize if I missed someone.  
Craig Martin Flea Market Director



**Editor's Note:** For the vendor's inside it was nice and warm in the Elks Hall, but the vendors outside darn near froze

## Jim's Tech Tips

### "Ignition Misfires"

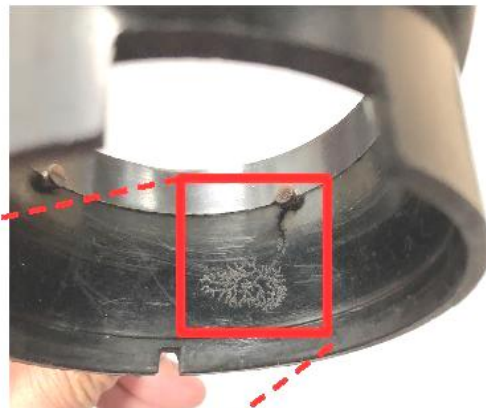
We've all experienced it. When the engine is cold and first started up, the engine is running rough and you can tell not all 4 cylinders are firing. It usually clears up in under a minute. But later, when the engine is warm, you should not feel a miss when climbing a hill or accelerating into traffic. If the power is just not there, like you know it should be, where to look? It could be a carburetor problem, but don't overlook fouled spark plugs and problems in the distributor.

Check the point gap in the distributor. The cam follower wears as you drive and the point gap closes down, giving a weak spark. So check it and increase the gap back to 0.020" if needed. While you are there, look for burned points and clean them up or replace them; you might have a bad or weak condenser.

Look at the rotor. Make sure the black flat spring is touching the underside of the cap, and is not burned up. Wipe off any oil film on the rotor.

Look at the underside of the distributor cap. Inspect the graphite button on the underside. I have seen caps with the entire button broken off and missing.

Look at the inside of the distributor body (the black plastic piece). Look for an oil and dirt film on the inside. Wipe it out with a clean cloth. Look for "carbon tracks" on the inside of the cap, where the spark is jumping down to ground on the metal housing. (See photo.) Replace if needed.



Until next time, *Have a Model A Day!*  
Jim



## 2025 Minuteman MEMBERSHIP Application Form

**PLEASE** complete the form and return with your check for \$20.

Membership: Renew - No Changes \_\_\_\_ ; Renew - Changes \_\_\_\_ ; New \_\_\_\_

First Name \_\_\_\_\_ Last Name \_\_\_\_\_

Spouse/Significant Other Name \_\_\_\_\_ Model A : \_\_\_\_\_

Street \_\_\_\_\_

City \_\_\_\_\_ State \_\_\_\_\_ Zip Code \_\_\_\_\_

email \_\_\_\_\_ Telephone \_\_\_\_\_ - \_\_\_\_\_ - \_\_\_\_\_

How would you like to receive your Newsletter: Electronically or US Mail (circle one)

### Welcome New Member

**Nan reports one new member this month:**



Jeff Rousseau  
361 Water Street  
Framingham, MA

### Call for Scratch Tickets



The New England Meet Raffle team is asking members to bring lottery scratch tickets to the May meeting. A Lottery ticket basket is a popular raffle room item. Some tickets were dropped off at the last meeting, but the more we have the better. Please consider donating some scratch tickets of any amount to this project. In the past members were so generous that we were able to make two lottery baskets. Can we do that again?

### CMARC TRIVIA QUIZ

1. What auto company offered A/C in 1939?
2. What was Earl McPherson's invention?
3. What other than tire rims has spokes?
4. Name two pedals in an automobile
5. In an original model A (1928-1931) what was used to keep the battery charged while running?
6. What was the short-lived Ford brand?
7. Name the big Ford model launched in 1959
8. What model Kaiser was named for NYC?
9. Name a spark plug tool.
10. What is called the edge on most streets?







## 2025 New England Meet Update

We are looking for volunteers (1) to help out in the repair tent; (2) as route monitors on the grand tour; and (3) as parking guides on the show field at Kimball's Farm at the end of the Grand Tour.

We are seeking donations for the raffle room; these could include Model A related items such as car parts or tools. We are also seeking donations of lottery tickets for a basket of lottery tickets that we are putting together for the raffle room.

We are also selling advertisements in the program book for the meet, and if anyone is interested in purchasing an ad or has a suggestion about a vendor who might be willing to purchase an ad, they should let us know. Ad sales help underwrite the event can be a good way to support the Model A hobby.

Individuals willing to donate items for the raffle, volunteer during the meet, or who would like more information about ad sales can contact Tom Zappala [at (781) 424-3364 or [t.zappala@comcast.net](mailto:t.zappala@comcast.net)] or Barbara McElhiney [at [mcelhiney@rcn.com](mailto:mcelhiney@rcn.com)]. Your support is very much appreciated

### The Model A Ford: The ultimate Recreational Fishing Vehicle

Over the years the Model A Ford has served its owners in many ways. Initially as the family's main source of transportation and later as a utility vehicle for a variety of applications. The Model A had a unique capability in that it could traverse almost any type of terrain and that made it a great vehicle for getting to the lake or ocean for fishing. The trusty Model A was put to the test and survived the challenges as shown in these pictures. Next time you are out for a drive and hit a few potholes just remember that in a previous life your Model A may have been one of those hard working RFV's.



**Now That is one BIG fish**

## ANSWERS TO CMARC TRIVIA QUIZ

1. Packard
2. Struts
3. Steering wheel
4. Gas & brake pedal
5. Generator
6. Edsel
7. Galaxie
8. Manhattan
9. Gapper
10. Curb



## NEW Advertiser

### Fundamentals First Fund

Symbol: KNOW

**Your money  
Carefully managed**



The Fundamentals First Fund, an ETF, is part owner of approximately 100 publicly traded worthy companies and owns publicly traded debt. We have been individually selecting companies with care for over three decades as Mason Capital Partners. If you are interested, read on via our website at

**www.FundamentalsFirstFund.com**

*Mason Capital was founded by Model A member Al Mason (1931 Fodor)*

2/21/24 IPO Market Open:	\$10.00
3/31/25 Market Close:	\$10.52
Dividends Paid:	\$ 0.18

*Investors should consider the investment objectives, risks, charges and expenses carefully before investing. For a prospectus or summary prospectus with this and other information about the Fund, please call 617-228-5190 or visit our website at [www.fundamentalsfirstfund.com](http://www.fundamentalsfirstfund.com)*

*Investments involve risk. Principal loss is possible.  
Quasar Distributors LLC.*

# Support Our Sponsors



The Big Apple restaurant



**(508)229-2829**

[www.bigapplerestaurant.net](http://www.bigapplerestaurant.net)

890 Boston Post Road E  
Marlborough - MA

EST. 1840  
**H.H. WARREN INSURANCE AGENCY, INC.**

22 GLEASONDALE ROAD STOW, MA 01775

[jsmith@hhwarreninsurance.com](mailto:jsmith@hhwarreninsurance.com)

JEFFERY SMITH  
President

Tele: (978) 897-7074  
Fax: (978) 897-9320

**STONEWALL**  
insurance group inc.

We work with all of the top insurance companies to find you the best coverage for the best price.



**Jeff DeMarey**  
(413) 514-0469

**THE BEST CARS DESERVE THE BEST INSURANCE.**

[stonewallinsurancegroup.com](http://stonewallinsurancegroup.com)

**Mike's "A" Ford-able Parts**

**Mike Butcher**



124 Model A Drive, Maysville, GA 30558

email: [mike@mikes-afordable.com](mailto:mike@mikes-afordable.com) - [www.mikes-afordable.com](http://www.mikes-afordable.com)

Fax: 706 652 2492 - Phone: 706 652 3866

1 888 TRY MIKE (879 6453)



*Specialising in 1928 - 1931 Model A Ford Parts*



# Class "A" Advertisers



**Thomas J. Dyer, CPFA**  
Wealth Manager

354 W. Boylston St., Suite 231  
West Boylston, MA 01583

978 264 1906 office  
855 330 3679 fax  
tdyer@pwfgllc.com  
www.pwfgllc.com

Securities and Advisory Services offered through LPL Financial,  
a Registered Investment Advisor. Member FINRA/SIPC.



Specializing in Ford  
Model A & T repair  
and restoration.

**Ryan Thibeault**  
Owner

67 Old Wakefield Rd  
Milton, NH 03851  
603-652-8609  
tebobarn@gmail.com



EST. 1947

CUSTOMS  
ANTIQUE  
BOATS  
RV'S

**RUSMART**  
AUTO UPHOLSTERY

723 MAIN STREET (RTE. 12), NORTH OXFORD, MA 01537

Ken & Art Clements

**(508) 987-1171**



**MITCHELL  
MANUFACTURING**



**Steve & Cyndi Mitchell**

**Mitchell MFG.**

530-458-4500 800-859-2088

www.mitchelloverdrivemfg.com

mitchmanfc@frontiernet.net

MODEL A FORD

SYNCHRONIZED-TRANSMISSION

VINTAGE CAR OVERDRIVES

FORD OVERDRIVES/UNDERDRIVES

1928-1948

P.O. Box 925

1157 Parker St.

Colusa, CA 95932



**CENTRAL MASS  
POWDER COATING**

It's all in the details

32 Greeley St

Clinton MA 01510

info@CentralMassPowderCoating.com

www.CentralMassPowderCoating.com

(978) 365-1700



**TAM'S MODEL "A" PARTS**

42 TEMPLE STREET

WEST BOYLSTON, MA 01583

Tel: (508) 835-9292

(800) A-PARTS-1

Fax: (508) 835-9199



www.modelaparts.com

email: tamsforda@aol.com

**EVERYTHING FROM A TO T!**



**FREE  
CATALOG**  
\$10.00 Outside the U.S.



**888-262-5712**

snydersantiqueauto.com

**THE WORLD'S LARGEST SUPPLIER OF 1909-31 FORD PARTS!**



800-255-1929 or www.brattons.com

1606 Black Acre Circle, Mount Airy, MD 21771

Send for a free 194-page illustrated Model A Catalog with over 3,900 Model  
A parts, with full descriptions & illustrations—over 90% are U.S. made.

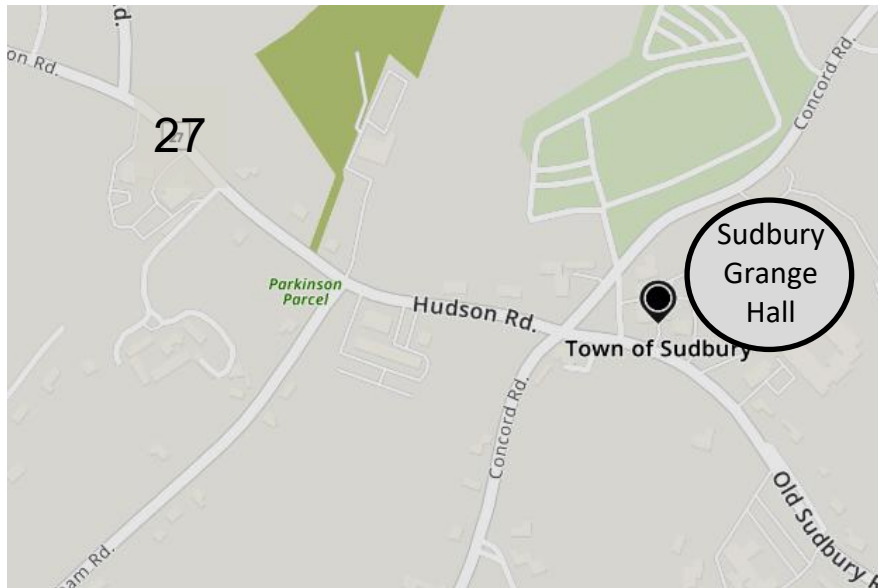
### May Meeting News

At the May meeting we will have a briefing on the recent Tune-up clinic held earlier.

Tom Zappala will give us an update on the NE Meet activities.

Tours are getting underway and don't miss the Post Office Pub lunch tour on May 6th.

Don't forget the two paid events the club participates in, The Wellesley Veterans Parade (5/18) and the Wellesley College reunion (5/25).



Our meetings are held on the **1st Wednesday** of the month at the Sudbury Grange Hall, 326 Concord Rd in Sudbury. Meetings start at 7:30 PM.

Be Sure to visit [www.oilleak.org](http://www.oilleak.org)



Please  
Mail to:

**MAY 2025**



**Minuteman Model "A" Ford Club  
PO Box 545, Sudbury, MA 01776**